



KTPS36 Series

DoE Level VI

36-Watt 2-Pin Desktop Adapter DoE/CEC Level VI Universal Input,

INPUT SPECIFICATIONS

All specifications are typical at nominal input, full load.

INPUT SPECIFICATIONS

Input Voltage	AC 100 – 240VAC
Input Frequency	50 – 60Hz
Input Current	1.0A Max
Protection	Internal Primary Current Fuse Inrush Limiting

OUTPUT SPECIFICATIONS

Output Voltage	See Chart
Efficiency	DoE Level VI, Energy Star, ErP Stage 2, NRCAN & GEMS Level VI
Protection	Short Circuit Protection Over Current Protection Over Voltage Protection
Ripple	1 - 2 % Vp-p (max)
Hold-Up Time	10 mS (min)
Transient Response	0.5mS for 50% Load Change(typ)
Load Regulation	± 5% (typ)
Leakage Current	0.25mA @ 2 pin

GENERAL SPECIFICATIONS

MTBF(Calculated)	300,000 Calculated hours at 25°C by Telcordia SR-332
Dielectric Withstanding Voltage	3,000 VAC Primary – Secondary
EMI Conduction & Radiation	Compliance to EN55022 Class B
Harmonic Current	Compliance to EN61000-3-2,3
EMS Immunity	Compliance to EN61000-4- 2,3,4,5,6,8,11
Safety Approvals	UL/cUL/CE/CB/GS/PSE/FCC



FEATURES

- UNIVERSAL INPUT (AC100-240V)
- DoE LEVEL VI
- OVER VOLTAGE PROTECTION
- OVER CURRENT PROTECTION
- SHORT CIRCUIT PROTECTION
- ROHS COMPLIANT

ENVIRONMENTAL SPECIFICATIONS

Operating Temperature	0°C~+40°C
Storage Temperature	-20°C ~ +80°C
Cooling.	Convection
Operating Humidity	20 – 80% Rh
Storage Humidity	10 – 90% Rh

MECHANICAL SPECIFICATIONS

Case Dimension	L100 x W50 x H33(mm)
Input Configuration	IEC320-C8
DC Cord	18AWG (Optional 20 & 22 AWG)
Output Connector	5.5 x 2.1 x 9.5 mm C+

Model Number	Output Voltage	Output Current	Max Output Power
KTPS36-05050DT-2P-VI	5.0V	5.0A	25.00W
KTPS36-75040DT-2P-VI	7.5V	4.0A	30.00W
KTPS36-09033DT-2P-VI	9.0V	3.34A	30.00W
KTPS36-12030DT-2P-VI	12.0V	3.0A	36.00W
KTPS36-13526DT-2P-VI	13.5V	2.66A	36.00W
KTPS36-15024DT-2P-VI	15.0V	2.4A	36.00W
KTPS36-24015DT-2P-VI	24.0V	1.5A	36.00W
KTPS36-48075DT-2P-VI	48.0V	0.75A	36.00W

Part Number Key:

KTPS36- xxx yy DT-2P-VI- z - p

xxx = output voltage

12=12.0V 135 = 13.5V example

yy = output current

55 = 5.5 amp example

z = AC input plug

C = IEC 320 C14, D=IEC 320 C6

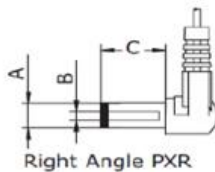
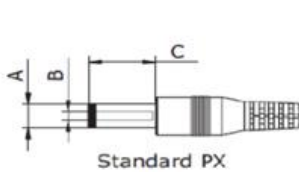
p = output connector

P1/(R)* = 2.1/5.5/9.5mm, P2/(R)* = 2.5/5.5/9.5...

* **R** = Right Angle Connectors

Note: Center Positive (+) standard

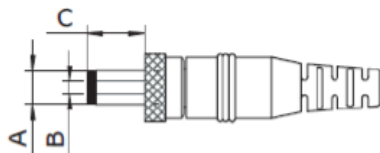
Standard DC Plug



	A	B	C	Unit
P1 / P1R	5.5	2.1	9.5	mm
P2 / P	5.5	2.5	9.5	mm
P3 / P3R	3.5	1.35	9.5	mm
P4 / P4R	3.8	1.35	9.5	mm
P5 / P5R	3.8	1.05	9.5	mm
P12/P12R	5.5	2.1	12	mm

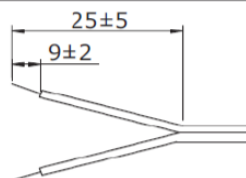
P100 = User Defined

Locking DC Plug



	A	B	C	Unit
P6	5.5	2.1	9.5	mm
P7	5.5	2.5	9.5	mm

Stripped and Tinned



ST = Stripped and Tinned



KTPS36 Series

DoE Level VI

8. Mechanical :

8.1 Weight : 170 g Typical

8.2 Cable Type : **Black UL2468 20AWG**
(Wire + Plug)

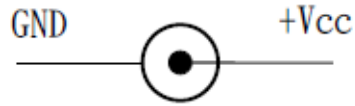
Plug : $\varnothing 3.5 \times \varnothing 1.35 \times 10\text{mm}$
(Tuning Fork & Cannelure)

8.3 Cable Length : 1500mm

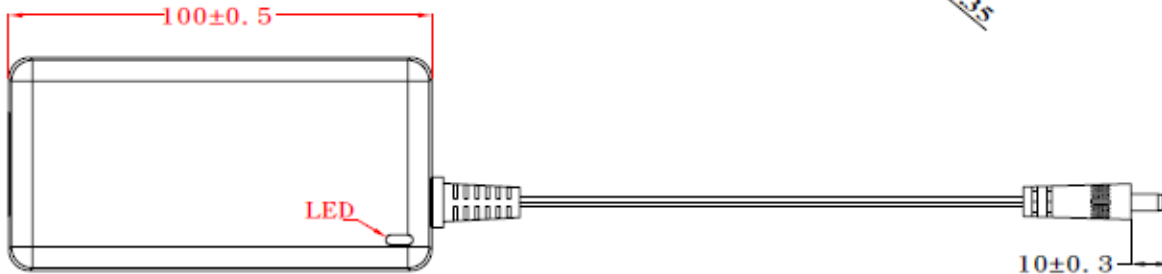
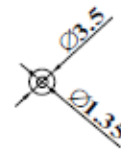
8.4 Case Dimension : 100mm(L) \times 50mm(W) \times 33mm(H)

8.5 Material Flammability : UL 94V-0

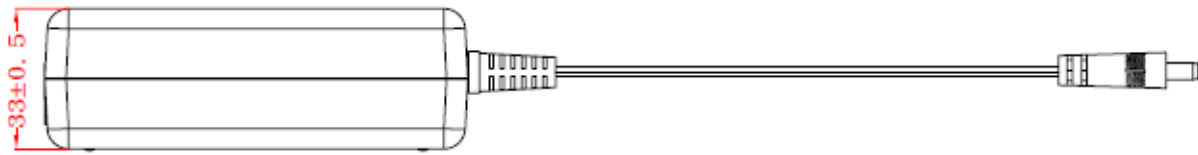
8.6 External Appearance : As drawing below (Scale \rightarrow mm)



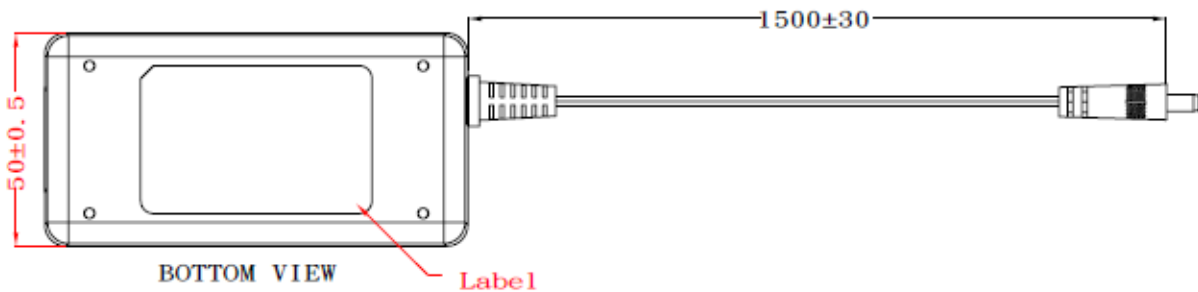
Output Cable Plug Pin Assignment



TOP VIEW



SIDE VIEW



BOTTOM VIEW

Label